

==: COLON ==:



TEA-ROOM
STRANGERS
CLUB

STRANGERS CLUB OVERLOOKING BAY

SLIFER PARK

The top picture shows the house in which Gilbert wrote his famous "Panama Patchwork," now the office of Robert Wilcox. The Strangers Club is well patronized by employees on the canal. Concerts are held each Thursday and Sunday evenings in Slifer Park.

:-: COLON :-:



PUBLIC MARKET



CHRIST CHURCH



GIRLS PUBLIC SCHOOL



BOYS PUBLIC SCHOOL



GOVERNMENT PALACE



CATHOLIC CHURCH

The Panamanian Government has made great progress in the matter of schools and public buildings. Two public schools, one for boys and the other for girls, have been recently completed. Christ Church, built by the Panama Railroad, after the Gothic style, was the first Protestant house of worship on the Isthmus.

== COLON ==



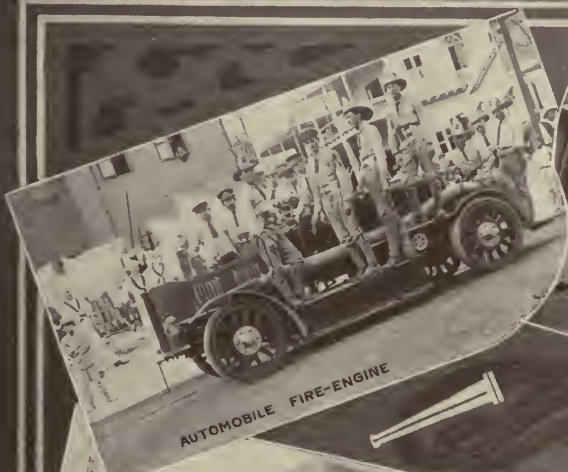
RED CROSS RELIEF CAMP



FIRE OF MARCH 23, 1911



FIRE OF MARCH 23, 1911



AUTOMOBILE FIRE-ENGINE



MASQUERADERS



POLICE FORCE



FIREMEN ON PARADE

Colon has had many disastrous fires. The fire of March 23, 1911, covered six blocks with a loss of \$500,000. The greatest fire was in 1885, which completely destroyed the town, loss \$12,000,000. The Fire Department has an English built automobile fire engine.

:-: COLON :-:



DOCK SCENE



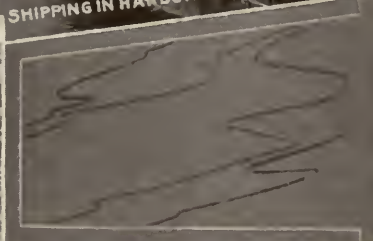
FRENCH MAN-OF-WAR



SHIPPING IN HARBOR



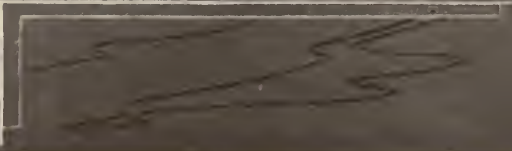
LANDING FRUIT



HARBOR FRONT



NATIVE SMALL CRAFT



Garden truck, fruit and fish are transported to Colon by natives in all sorts of peculiar small craft, a much of the marketing is done on the beach. Many of the native canoes are carved from the trunks of trees

: : COLON : :



S. S. "Guadeloupe" of the Compagnie Generale Transatlantique (French Line), Colon and France; New York and Havre-Paris; Mexico, Cuba and France.



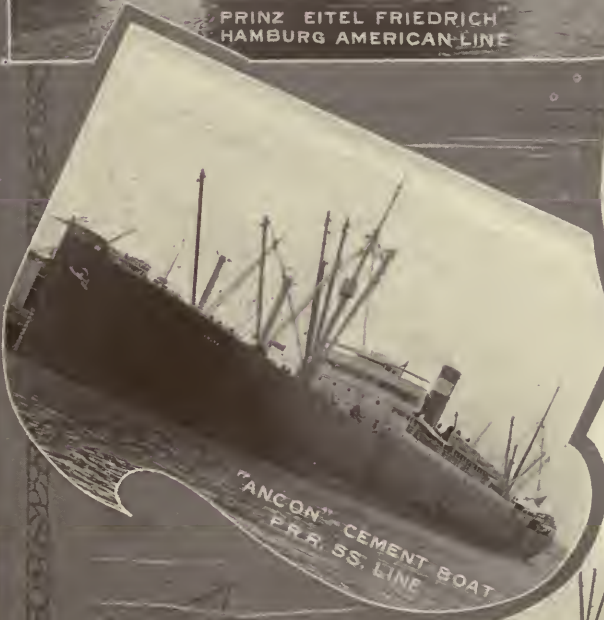
PRINZ EITEL FRIEDRICH
HAMBURG AMERICAN LINE



ZACAPA UNITED FRUIT CO.



"CLYDE"
THE R. M. S.
CO.



"ANCON" CEMENT BOAT
P. R. R. S. S. LINE



"COLON" PASSENGER BOAT P. R. R. S. S. LINE

A few of the steamships of the several lines calling at the port of Colon,

::: COLON :::



Store, Factory and Residence of Frank Ullrich & Company.



Interior—Colon Branch, International Banking Corporation.



Office of W. Andrews & Co. Steamship, Forwarding and Commission Agents. Agents, Leyland Line and Harrison Line, Liverpool, England; Munson Steamship Line and West India Steamship Co., New York. Est. 1889.

::: COLON :::



A typical furniture and hardware store. There are no street cars in Colon, but cabs ply the streets; fare to any part of city 10 cents (gold).

:-: COLON :-:



GENERAL OFFICES



PANAMA RAILROAD COMPANY



NEW RAILROAD STATION



RESIDENCE GEN'L SERRANO



FREIGHT HOUSE



BURNED IN 1885

The Panama Railroad now has a long, narrow concrete building for its Colon station. The old stone station is used as a freight house. It was built on the site of the frame structure which was destroyed in the fire of 1885.

RELOCATED PANAMA RAILROAD



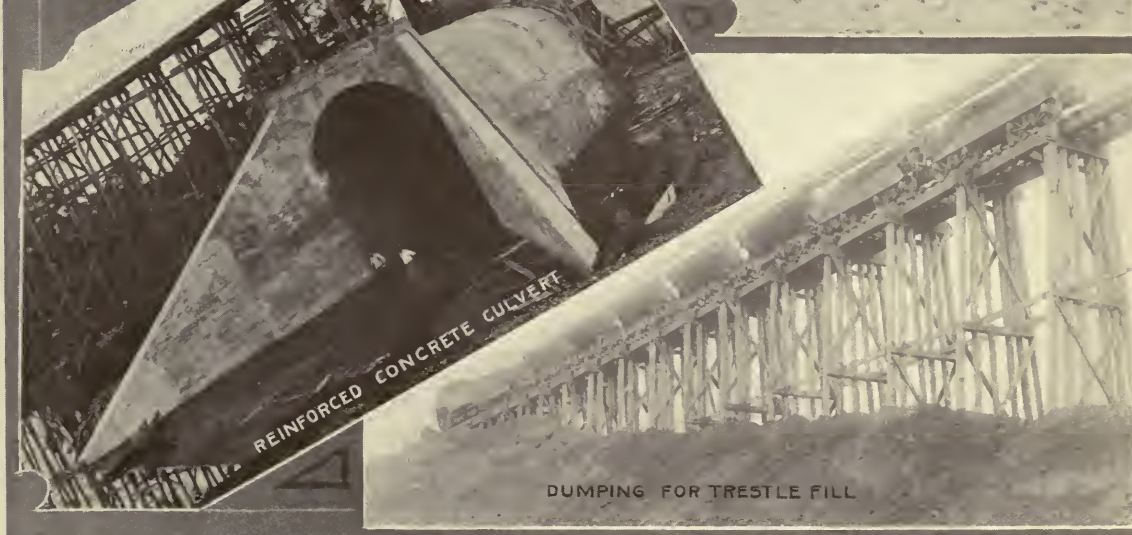
CHARACTER OF COUNTRY TRAVERSED



BUILDING TRESTLE FOR GOVT. MILL



LOADING DUMP TRAINS



REINFORCED CONCRETE CULVERT

DUMPING FOR TRESTLE FILL

One of the most difficult tasks connected with the canal is to relocate and rebuild the railroad, and at the same time not to interfere with the tremendous traffic across the Isthmus. The new line, being above the lake level, requires many heavy embankments.

:: CRISTOBAL ::



IN THE FRENCH DAYS



A TYPICAL STREET



FIRE DEPARTMENT RUN

This is the American section separated only by a street from Colon. The scenes of the old French days have changed with newer ideas. This section is now filled with scores of roomy houses and quarters for the canal employees, and I. C. C. manufacturing plants.

::: CRISTOBAL :::



Atlantic entrance of the Canal, showing Cristobal docks.



Dock 13 and office of Resident Engineer. Commission shipping in channel.



Roosevelt Avenue of to-day as compared with twenty years ago. Note the difference in size of the coconut palms. In the smaller picture is seen de Lesseps' former headquarters.

:--: CRISTOBAL :--:



Along the lane-like streets are the various institutions of a modern town—the Commission Clubhouse (Y. M. C. A.), hotel, school building, church building and lodge hall. The streets have a remarkably neat appearance, and palms and dainty ferns abound.

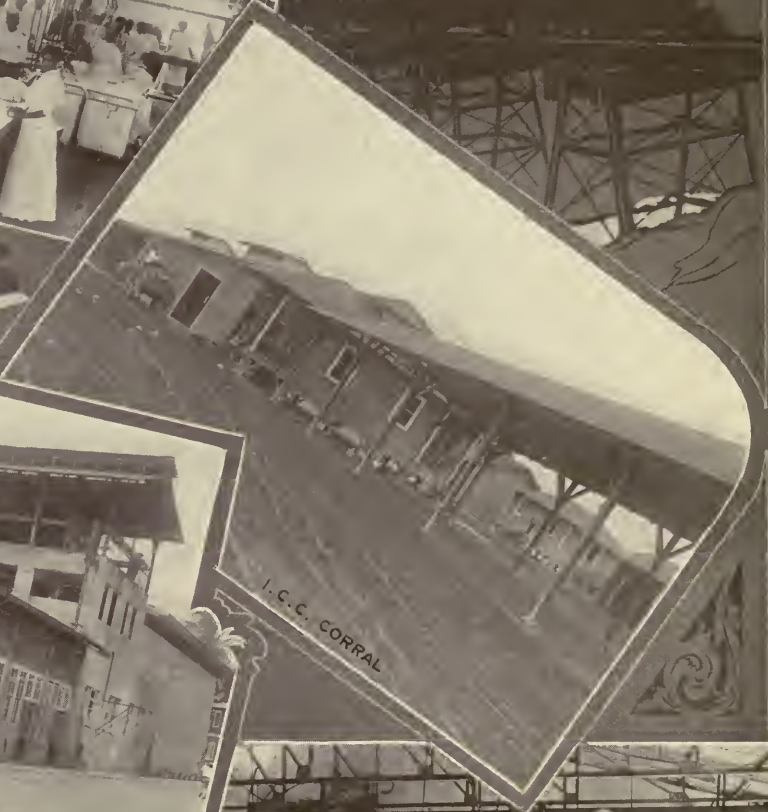
CRISTOBAL



P. R. R. ROUND HOUSE



LAUNDRY



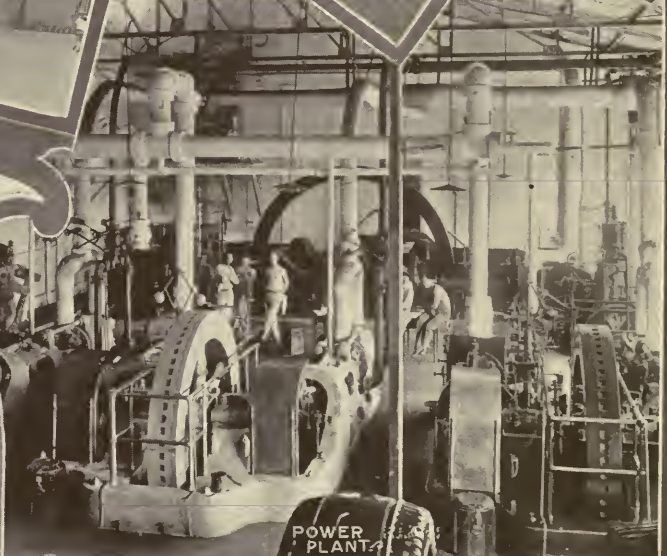
I. C. C. CORRAL



ICE AND COLD STORAGE PLANT



BAKERY



POWER PLANT

The Cold Storage and Ice Plant turns out each day about 90 tons of ice, which is sent to all settlements in the Canal Zone, to be distributed to the mess houses, etc. The bakery turns out 14,000 loaves of bread and 2,500 rolls daily; the laundry has a capacity of 7,500 pieces daily.

::: CRISTOBAL :::



Types of French dredges used in the Atlantic entrance of the Canal as early as 1888. Those found available were rebuilt by the Americans and seven of the ladder dredges are now in use.

∴ CRISTOBAL ∴



PIPE LINE SUCTION DREDGE "SANDPIPER"



P.R.R. FIRE TUG "PHOENIX"



STERN WHEEL TOW BOAT "EXOTIC"



SEAGOING SUCTION DREDGE
"CARIBBEAN."



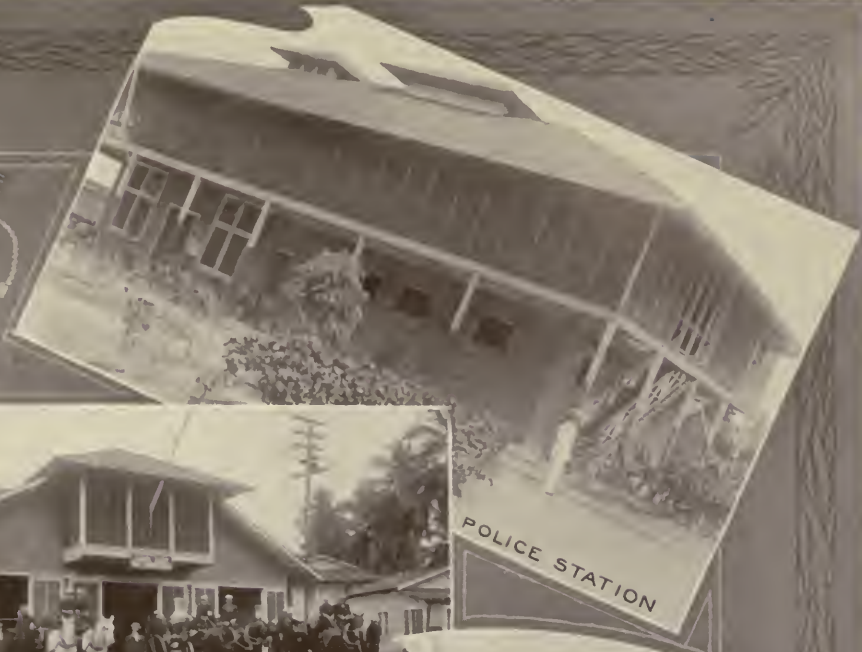
FIVE YARD DIPPER DREDGE
"CHAGRES"



TUG "RELIANCE"

There are various kinds of dredges for the different kinds of work to be performed. Above is shown a 5-yard dipper dredge, working at the intersection of the American and French canals; a sea-going suction dredge; a pipe line suction dredge; and tugs employed in the sand and stone transportation and in Colon harbor.

∴ CRISTOBAL ∴



POLICE STATION



FORMER FIRE STATION AND HOSE TOWER



POST OFFICE



COMMISSARY



OFFICE BUILDINGS NO'S 1 & 2



DE LESSEPS FORMER HEADQUARTERS

Former headquarters of de Lesseps, now used by the Commission as office buildings. The statue is that of Christopher Columbus and an Indian girl. The Commissary is conducted on the plan of a department store, supplying to employees whatever is needed for their comfort.